



ECONALLIANCE

2022 PRIVATE SECTOR-FUNDED TARGET COMMUNITY
BROADBAND NEEDS ASSESSMENT

CUYAMA VALLEY

LOS ALAMOS

ORCUTT

BACKGROUND

- Pacific Premier Bank / EconAlliance: Multi-Year Funding Relationship
 - Early Years Funding: Financial Literacy/Workforce Workshops
 - 2021: Broadband Needs Assessments
 - Guadalupe
 - Lompoc
 - Santa Maria

BACKGROUND

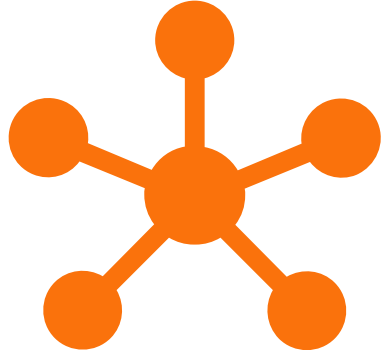
- 2022 Broadband Needs Assessments / Last Mile Analysis
 - Cuyama Valley
 - Los Alamos
 - Orcutt

ELEMENTS AND TIMELINE

- Expected Report Publication Date: December 15, 2022
- Report Elements:
 - Situation Analysis Q1 2022
 - Review of Regional/Target Community Research/Planning

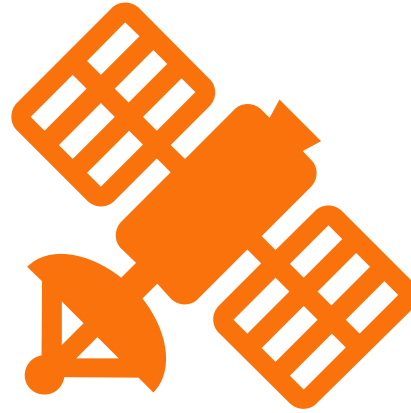
ELEMENTS AND TIMELINE

- County Broadband Strategy Project Inputs
 - Community Surveys
 - Community Speed Tests
- Target Community Interviews
- Key Gaps and Take-Aways
- Last Mile Analysis – EconAlliance Consultant
- Near and Mid-Term Opportunities



Last Mile Costs

Quantify last mile connectivity, cost and viability



GIS Mapping

Analyzes population clusters utilizing GIS tools/data



Fit to Areas

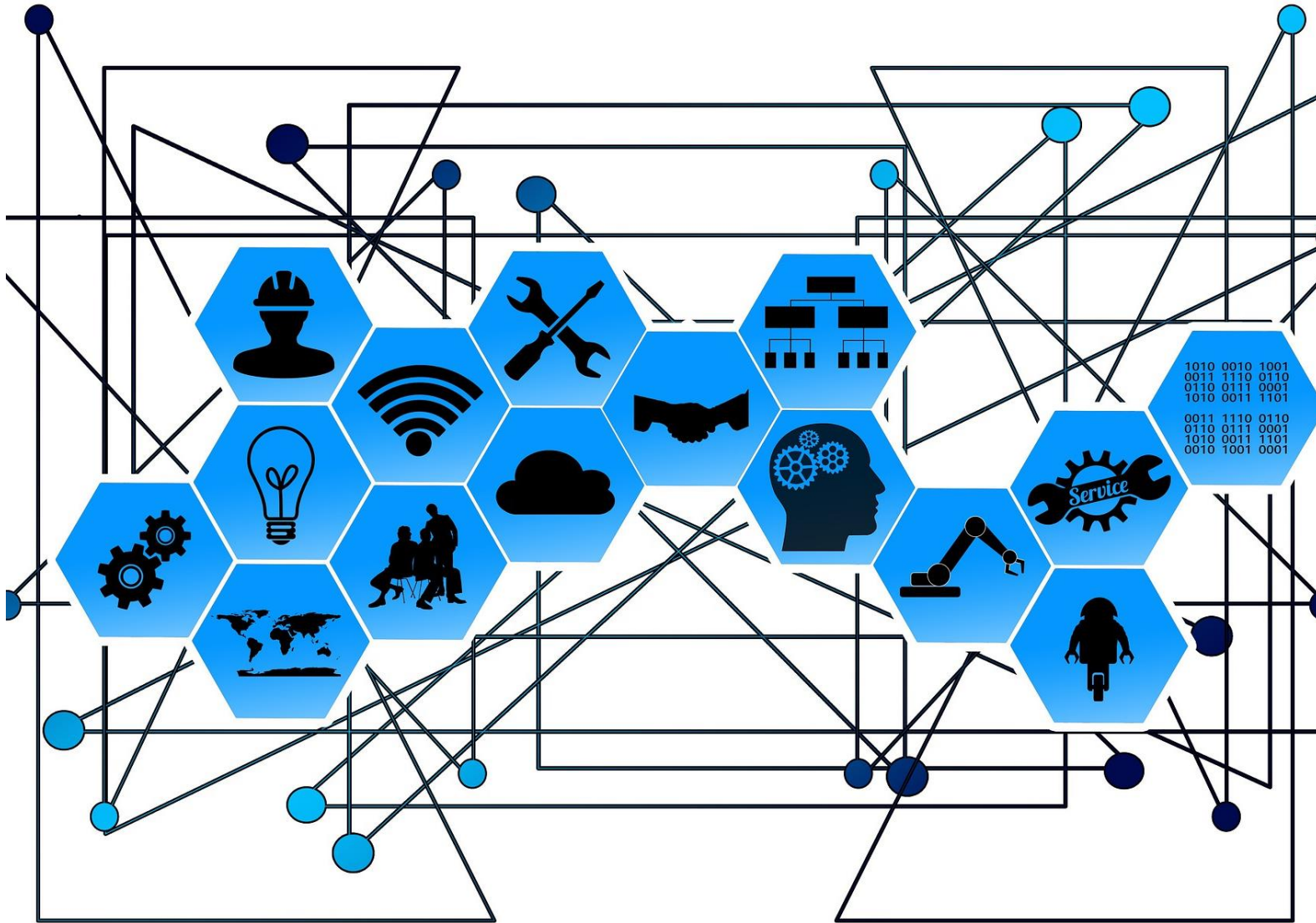
Fits various Network Architecture to areas*

*Fiber to the Home, Fixed Wireless Access, Point to Point Ethernet

LAST MILE CONNECTIVITY ANALYSIS*

*CONSULTANT ELEMENT

ECONALLIANCE



Q&A

ECONALLIANCE



VICKI CONNER, CONSULTANT
INITIATIVES@ECONALLIANCE.ORG

THANK YOU

ECONALLIANCE